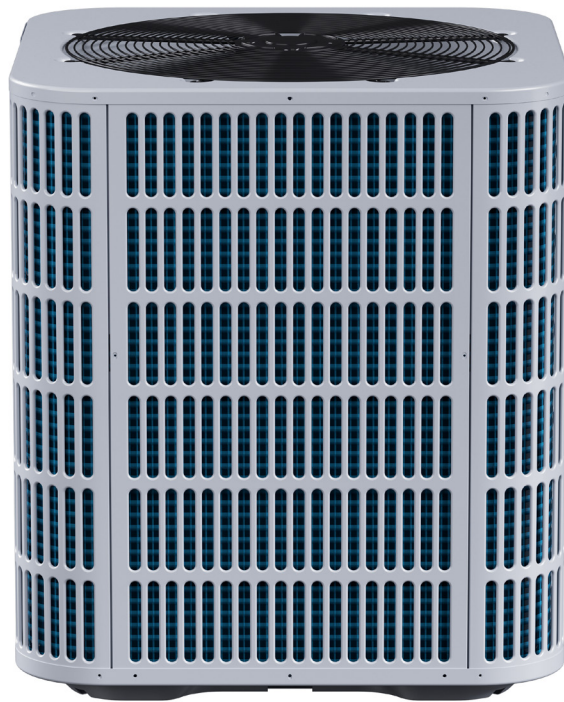
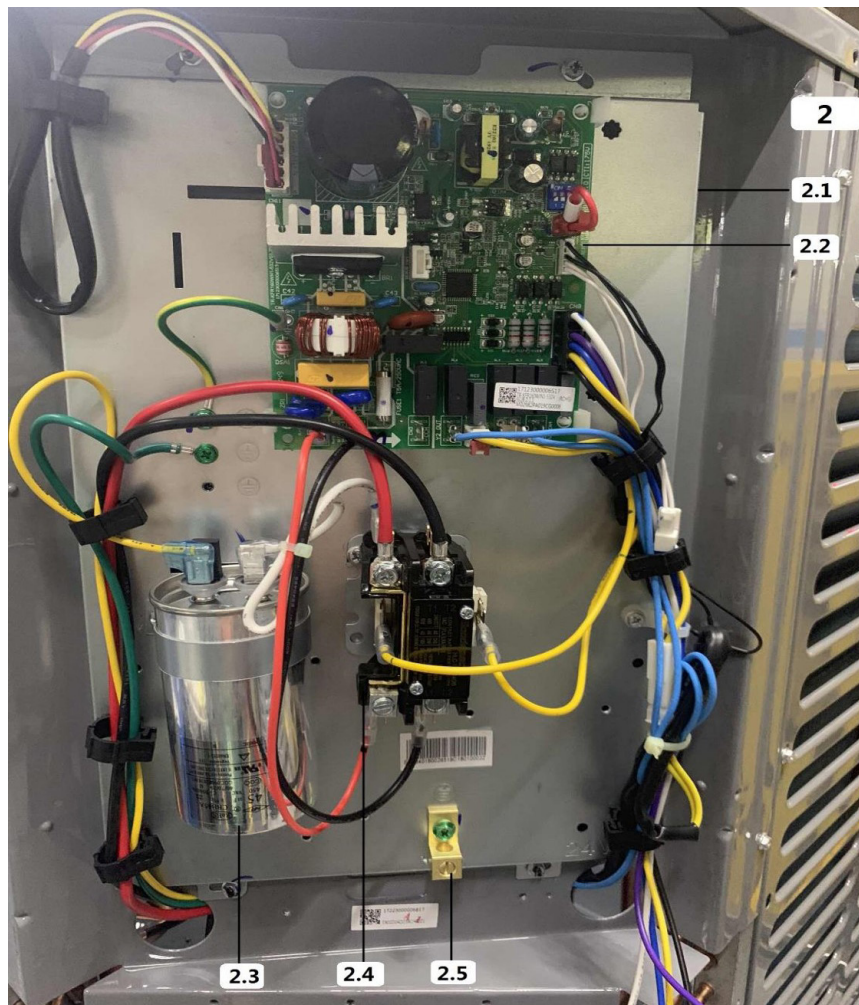
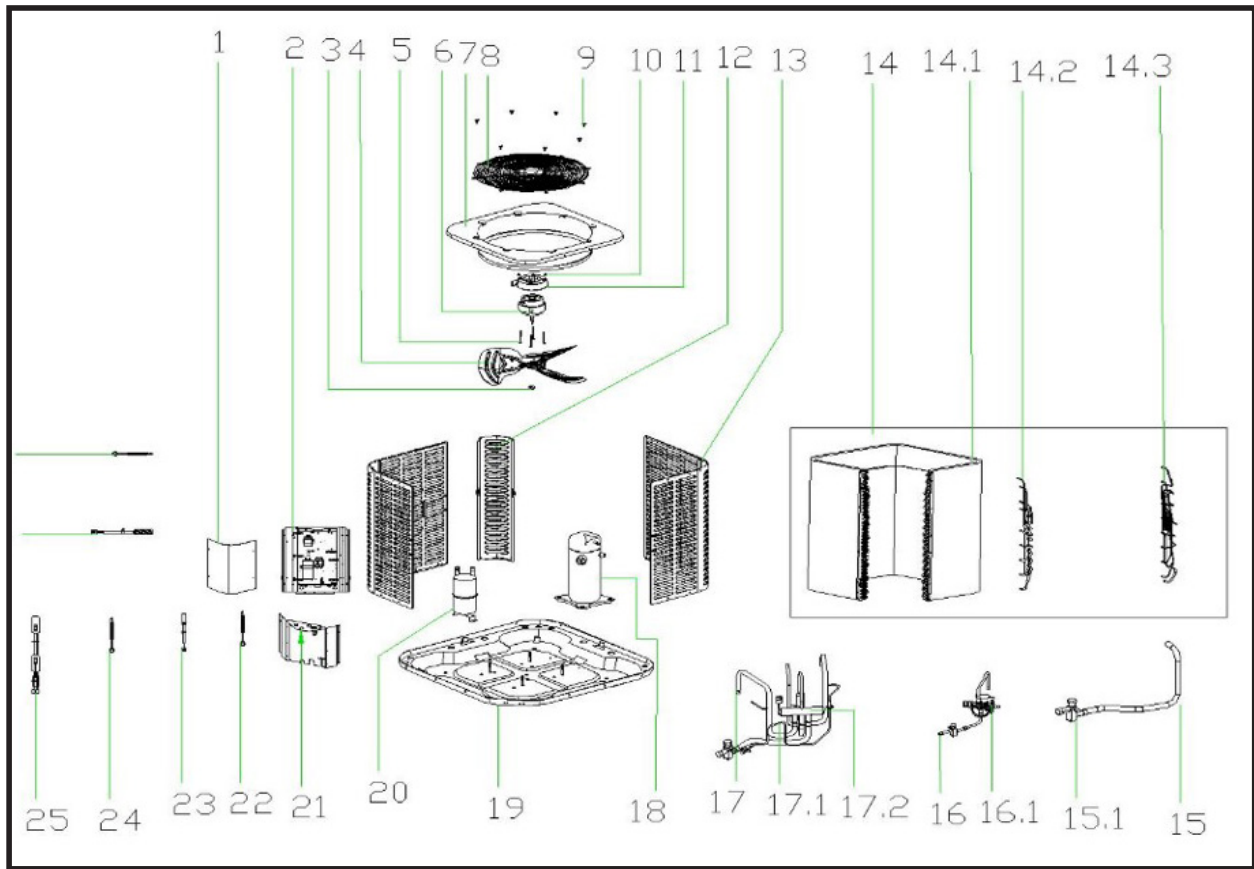

Comfort-Care® **Century**®
SE Series

Split System Heat Pump

RSH1561S1A
Parts List



MARS®



EX_ID	Spare Parts Code	Part Name(EN)	Qty.	Recommend store spare parts
1	12223000A05994	Side panel assembly	1	
2	17223000006818	E-part box assembly	1	
2.1	12223000010791	Installation plate of electric parts subassembly	1	
2.2	17123000006517	Outdoor main control board assembly	1	YES
2.3	17400103000150	Capacitor	1	
2.4	11203502000032	AC contactor	1	YES
2.5	11201708000008	Wiring Terminal	1	
3	11301512000143	Nut	1	
4	12200104000032	Fan,3 blade count,aluminum alloy galvanized,D 23inch,60DEG(60),1/2inch Shaft Bore,CW(along air flow direction)	1	YES
5	11301805000012	Motor Mounting bolt	4	
6	11002015009345	Brushless DC Motor	1	YES
7	12223000001094	Top cover assembly	1	
8	12227700003729	Top cover	1	
9	11301002000001	Stainless steel bolts	8	
10	11301604000001	Nut	4	
11	12123000000464	Motor installation board ass'y	1	
12	12223000002572	Side panel assembly	3	
13.1	12223000A02870	Side panel assembly	2	
13.2	12223000A02929	Side panel assembly	2	
14	15823000005261	Condenser part	1	YES
14.1	15823000004785	Condenser	1	
14.1	15823000004784	Condenser	1	
14.2	15123000008850	Condenser inlet pipe ass'y	1	
14.3	15123000008839	Condenser output pipe ass'y	1	
15	15423000005019	Suction pipe ass'y	1	
15.1	15427000001439	Fusible plug assembly	1	
16	15423000005018	Throttle assembly	1	YES
16.1	15500213001545	thermostatic expansion valve	1	YES
17	15423000005020	Four-way valve assembly	1	YES
17.1	15123000011750	Meter connector assembly	1	YES
17.2	15423000005021	Four-way valve part	1	YES
18	11102010001298	Fixed Speed Scroll compressor	1	YES
19	12223000012588	Chassis part	1	
20	15500508001115	Accumulator cylinder	1	
21	12223000016090	Side panel assembly	1	
22	17401110000020	Green ground line	1	
23	11201007000136	Pipe Temperature Sensor	1	YES
24	17401203001230	Compressor wire joint ass'y	1	
25	17402001000056	crankcase electric heater	1	YES
26	17400513000070	Discharge Temp. sensor	1	YES
27	11201007000073	Room Temperature Sensor	1	YES

Due to ongoing product improvements, specifications and dimensions are subject to change and correction without notice or incurring obligations. Determining the application and suitability for use of any product is the responsibility of the installer. Additionally, the installer is responsible for verifying dimensional data on the actual product prior to beginning any installation preparations.

Incentive and rebate programs have precise requirements as to product performance and certification. All products meet applicable regulations in effect on date of manufacture; however, certifications are not necessarily granted for the life of a product. Therefore, it is the responsibility of the applicant to determine whether a specific model qualifies for these incentive/rebate programs.



1900 Wellworth Ave., Jackson, MI 49203 • Ph. 517-787-2100 • www.marsdelivers.com

